



Encouraging all woodworkers in self-expression, craftsmanship and knowledge

Colorado Woodworkers Guild

August 2016

Upcoming Meetings, Classes, and Events

This information may also be accessed on the guild's web site. Go to <http://coloradowoodworkersguild.org> and scroll to the bottom of the page. The information there will likely be more up-to-date.

August 16, 2016

Dennis Scheel, a member of the Rocky Mountain Tool Collectors is a cooper. Dennis' coopering skills are used to make water buckets, which he seems quite passionate about. Dennis will present his bucket making at the August meeting.

August 18, 2016

The Rocky Mountain Marquetry Guild August meeting has a special guest Kagen Sound. CWG member Chuck Hix (our Librarian) asked me to post this. Please go to <http://coloradowoodworkersguild.org> and scroll to the bottom of the page for more info on this event.

September 17, 2016

Plane Restoration Class. Limited to 8 students you can signup/pay on line [here](#).

September 20, 2016

A few months ago Kevin Loyd and Dennis McCaigue gave us a demo on sharpening. The September meeting will have a presentation on the construction of wooden planes. Kevin will talk about building a Krenov style plane and Dennis will talk about building a European Horn plane.

October 18, 2016

Guild Auction. We didn't have an auction in 2015 and unfortunately ended up spending more than we took in. So, we are planning an auction for 2016. Got something to donate? We have room to store it. Drop an email to president@coloradowoodworkersguild.org.

October 22-23 and 29-30

Rockler Guild Exhibition. This has been an annual event for the past couple of years. We will have a presence there on the 22nd and 23rd. Perhaps you can help. I'm looking for various mini demos for this event.

November 15, 2016

Recently New Member Doug Wilson owns property east of Colorado City. On this property is a stand of very old One Seed Juniper (*Juniperus monosperma*) some of which is standing dead. Doug has graciously offered to give a talk on this wood which he is passionate about. Here are a couple of pics of wood he has harvested from among these trees.

December 10, 2016

Guild Holiday Party! We are holding the party at a different location this year. The cost of the previous location has essentially doubled. Our secretary, Gary Glatthar has arranged for us to use the hall at his church for NO cost!. The party will be held at Cloverdale Church Of God 5705 West Louisiana Ave Lakewood, CO 80226 More information will be posted as we approach the event!

January 17, 2017

Dan Rieple of Fine Ideas Furniture will give us a presentation. The topic of the presentation has not yet been decided. [Click here](#) to go to Dan's web site and see some of his work.

February 21, 2017

This presentation is being planned.

President's Message

Happy August. Summer seems to be flying by and I seem unable to get things done. I have been spending my woodworking time sharpening. It seems that all my plane irons and chisels are dull. My fault, when one plane gets dull, I pick up another. Same with the chisels.

Coffee

Last month we started something new at the monthly meeting. Rather than making 40 cups of coffee in an Aluminum percolator, we made coffee in Mr. Coffee drip machines and put it in insulated carafes. I think this went well. The cleanup is simpler and the coffee was, in my opinion, much better. Your feedback on this would be welcome.



Funeral Urn Project

This project will continue for the foreseeable future. We still have wood that can be used to make Urns.

Auction

We didn't have an auction in 2015 and unfortunately ended up spending more than we took in for the year. Thus, we are planning an auction for 2016. Got something to donate? We have room to store it. Drop an email to president@coloradowoodworkersguild.org.

We already have some pretty cool items for the auction: An old Wards wood lathe in pristine condition; a brand new 1.5-HP Delta dust collector, still in the box; a couple of Delta scroll saws; and quite a few bar clamps. I will begin to assemble a catalog of the auction items for you to peruse. When it's ready, you'll be able to view it on our website.

That's all I have time to talk about this month. Got sawdust to make. Happy woodworking.

Membership

Membership Problems??? Send an email to president@coloradowoodworkersguild.org

Do you have issues with your CWG account at <http://coloradowoodworkersguild.org> such as

- Unable to remember your username
- Can't remember your password
- Want to change your username, password, address, woodworking interests, or other item associated with your membership

These issues can now be handled on line! I am still happy to help as needed.

Go to <http://coloradowoodworkersguild.org/index.php/public-corner/faqs>. There you'll find instructions for all these issues and more. You do not need to log in to view this information. Take a look!

Membership status as of this writing (July 1, 2016):

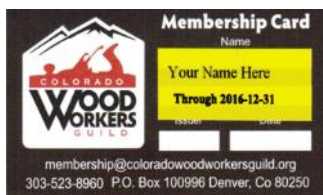
78 Members paid through the end of 2015

244 Members paid through the end of 2016

244 Active memberships total

I sent out an email some time ago informing lapsed members that they were, in fact, lapsed. Many did not respond. This is normal; people move away or find that they do not wish to continue membership. Many did respond and did renew. Many said they would renew and have not. I'm not really sure how to deal with this. If you intend to renew and have not, please do so.

The 2016 member cards look like this (member name/expiration in black text on a yellow background). If your member card does not look like this it is expired.



Cary Goltermann

July Meeting Presentation

Shaving Horse from a Log

Michael Springer showed Guild members how to turn a log into a proper shaving horse. The shaving horse was a mainstay of woodworking in Colonial America. They were typically used to prepare stock for turning a variety of practical things such as bowls and rake handles. Resurgence in rustic woodworking championed in part by Roy Underhill has revived interest in this simple workbench.



Fundamentally, the shaving horse is a large clamp that holds rough stock for shaping with a draw knife. Michael explained there are two styles of shaving horse. The English or bodger's horse has a head fitted between two neck pieces. English-style shaving horses work well on short stock. The Continental or dumb head style has a single thick neck that widens at its top giving it the shape of the letter "T". Dumb head horses excel at working with longer stock allowing a piece to be slid out and quickly repositioned on the other side of the head.

Michael brought a split conifer log and tools he uses to shape his horse. Michael recommends using dried logs for they remain more stable after assembly. When a large crack does appear, he stops further splitting by drilling through it and gluing a $\frac{3}{4}$ " hard wood dowel into the hole. A chain saw roughs out of the horse's seat from the log's bottom half and slices a long mortise through it.

Michael uses dry tree branches as horse legs. Their natural curve lends a graceful appearance and, because the grain remains parallel along its length, branches better withstand the stresses of repeated use. Springer employs a tenon cutting bit in an electric drill to fashion a round shaft on each leg. Then he bores a matching hole in the horse's seat for each leg. Michael starts the hole with an auger bit and flattens its bottom with a self-feeding Forstner bit. Countersinking the holes makes it easy to insert leg tenons and helps hold them securely.



The dumb head itself is carved from the top half of the log. Its neck is sized to slip through a rectangular mortise in the horse's seat. The dumb head's neck pivots on a dowel in this mortise giving it its clamping action. A key consideration is to locate the neck's pivot point so that it releases its grip when the carver releases pressure on the neck. This design eliminates the need for a bungee cord to open the dumb head. Slipping a plywood foot treadle on the lower end of the neck, adding a 2-foot long table made from a 2x10 cutoff and a wood wedge to elevate it completes the horse.

With the horse assembled, Michael picked up his favorite draw knife, placed a rough stick under the dumb head and demonstrated the motions of refining its shape. There's more to using a draw knife than one might think. Learning effective shaving techniques must wait for a future Guild meeting.



Jim McNamee

[Click here and log in to view video](#)

Show and Tell July

The July show was a combination of a both showing and telling as well as asking for help. The first item was a router plane made by **Dennis McCaigue**. This type of plane was also known as “widow’s tooth” or an “old hag’s tooth plane”. You can just imagine the discussions in a Georgian England cabinet shop after a few pints of lunch that led to the creation of the name. Dennis’ is a copy of a Preston variation from around the 1890s, and he used an extra plow plane blade. This will help to clear out those dados nicely, and Dennis promised to bring it back when he has it in final working order.



Next up was “Whatsit” that **Doug Wilson** brought in for identification. After carrying this item in his tool box for 30 years, he finally brought it to the group to assist in figuring out what this thing might be. With the help of fellow show-and-teller, Dennis McCaigue, it was determined to be an adjustable depth stop for auger bits.



Next was **Bill Healy** with his marble puzzle in the shape of Texas. At first Bill indicated that the whole project had been done with a single pocket knife, but then confessed that it was actually the work of his Legacy CNC machine. Bill made the shape of Texas in the CNC software “Aspire” and then did fractional offsets inside the outline. He made a few connections and course changes and then set the pocket knife to work.



Cliff Farris also brought in a show and help project. Cliff brought in the top of an old chest that is a prized possession of his son that has cupped rather noticeably. There was some discussion among the members as to what options Cliff has to correct the problem. We hope he is successful with his efforts.



The **winner** of the night was **Ed Lippert** with his cherry vessel. Ed found this chunk of wood in an old burn pile and decide he needed some wood bits and shavings on his shop floor to help with the current décor of tools and such. He started with a King Arthur power carving bit that others have likened to a spinning wheel of terror that happens to also remove wood. Ed then shifted to a carving tool from ArborTech and he also used forstner bits to work deeper inside the piece. The end result was a nice sculpted vase.



Thank you to everyone who bought in their pieces to share and to ask about. With the depth and breadth of knowledge our members have, there is likely to be someone who can help you with your hurdles or answer that nagging question of “What is this thang?”.

Kevin Loyd

About Wood

This month, August 2016, we consider **White Ash**. **White Ash (*fraxinus americana*)**, is a large tree from the family Oleaceae, the olive family. **White Ash** is distributed in eastern Canada and in the United States from Maine to Florida, west to Illinois and south-west through Missouri, Texas, Oklahoma, and Kansas.

White Ash is also called **Biltmore Ash**, **Smallseed White Ash**, and **Cane Ash**. **White Ash** is the largest and most important of the 18 ash species native to the United States.

Recall that in previous columns, we have defined the Modulus of Rupture (MOR), the Modulus of Elasticity (MOE), Crush Strength, and Janka Hardness. We will continue to use those terms. Most of the other terms are generally well understood and will not be defined further. If you have questions about other terms or questions about a specific wood, contact wood@coloradowoodworkersguild.org.



White Ash

Here is a summary of the characteristics of **White Ash**:

Distribution: southeastern Canada, eastern U.S. west to Oklahoma, Texas, and Kansas

Tree size: 65-100 ft. (20-30 m) tall; 2-5 ft. (0.6-1.5 m) trunk diameter

Average Dried Weight: 42 lbs/ft³ (675 kg/m³)

Specific Gravity: (Basic, 12% MC): .55, .67

Modulus of Rupture (MOR): 15,000 lbf/in² (103.5 MPa)

Modulus of Elasticity (MOE): 1,740,000 lbf/in² (12.00 GPa)

Crush Strength: 7,410 lbf/in² (51.1 MPa)

Janka Hardness: 1,320 lb_f (5,870 N)

Shrinkage: Radial, 4.9%; Tangential, 7.8%; Volumetric, 13.3%; T/R Ratio, 1.6

Heartwood Appearance: light to medium brown

Sapwood Appearance: wide; beige or light brown

Grain/Texture: medium to coarse texture similar to oak; grain usually straight and regular

Stability: very good; better than red oak

Relative strength: excellent

Decay Resistance: subject to decay and insect attack

Workability: moderate blunting effect on cutting tools; easy to plane; easy to bore; glues moderately well; resists splitting; good nail holding and screwing properties; sands and finishes well
odor: distinct, moderately unpleasant smell when worked

Toxicity: irritant

Potency: low to moderate

Toxicity Source: dust

Reaction: skin irritation and breathing issues

Sustainability: not threatened

Uses: many uses, including flooring, millwork, boxes/crates, baseball bats, furniture parts, chairs, veneer food containers, paddles, railroad car components, chests, some sporting good items, and cabinetry

Typical Cost: least expensive of utility hardwoods; similar to oak; 4.6% of commercial U.S. hardwoods

Remember, if you have questions about a specific wood, don't hesitate to send a note to wood@coloradowoodworkersguild.org.

Community Service

WANNA MAKE SOME TOYS??

The Community Service Committee is gearing up for its 2016 Holiday Toys Program. Members help cut, drill, sand, and decorate toys from materials furnished by the Guild. The toys are distributed at the Holiday season to child resource agencies, such as shelters and other programs for abused and at-risk kids. The actual production work is done at work sessions held at Jeff Roth's shop in Parker, at Doug Pinney's shop in Monument, and in members' own shops. This is a great opportunity for members who would like to gain more experience making toys to work alongside members who are old pros at this game. Any member who would like to learn more about the program, or to sign up to be on the Toys Brigade for this season, should call or write Charlie Kuechenmeister at 303 830 2555/ charlesk13@gmail.com or Jeff Roth at 303 517 7095/ jeffroth@myawai.com. If you are planning to make toys in your own shop it is important to let us know how many and what kind of toys you are planning to build. Samples of the kinds of toys we build, and a sign-up sheet, will be available at the meeting on August 16, 2016.

Charles Kuechenmeister & Jeff Roth

Sponsor's Corner

Paxton: The Wood Source

The Frank Paxton Lumber Company (see www.paxtonwood.com) has been associated with and supported the Colorado Woodworkers Guild for many years. In fact, in an earlier time the Guild used to have many of their meetings in the Paxton facilities, and now they provide a wood of the month to Guild members.

The Paxton Lumber Company began business in Kansas City, Missouri in 1914. They established a Denver presence in 1931 and moved to their current location in 1950. Today, in addition to maintaining stores in Denver and Kansas City, Paxton has locations in Chicago, Cincinnati and San Antonio. In 2012 Frank Paxton Lumber Company was purchased by Hardwood Specialty Products, Inc. (see www.hardwoods-inc.com), a company with many distribution centers throughout western Canada and the U.S.A. The Paxton name continues to be used in the Middle America region.

Jack Egan manages the Denver retail store. Jack is a 1974 graduate of the forestry program at Ohio State University. He began his career as a timber "cruiser" locating hardwood trees for harvest. He learned to practice "release cutting", identifying the larger trees for removal to make room for the new growth. After this early work in the timber forests, Jack found a new home with Paxton in Denver. He has been at the Denver store for 39 years but has reduced his hours in anticipation of eventual retirement.

The Denver store supplies sheet good, veneer, hardwood lumber, edgings and mouldings. They stock over 50 species of hardwood, 15-16 of these species are imports. When possible they buy plantation-grown wood and their sheet goods have no formaldehyde. The entire Paxton team takes pride in their certification by the Forestry Stewardship Council (FSC).

The biggest challenges Jack and Paxton face are customer education and sometimes the supply of materials especially when subject to the national economy and international geopolitical situations. He is proud that his staff has been very stable. A large part of the Paxton-Denver business is industrial (selling to commercial shops) and also their custom moulding services although the store does extremely well with its retail hardwood sales.

The most satisfying aspects of the work for Jack involves supplying materials to customers who have complex, custom projects and who come back after the project is complete with compliments and gratitude for Paxton's assistance.

Guild Liaison for Frank Paxton Lumber is Bob Kleinfeldt

liaison-paxtonlumber@coloradowoodworkersguild.org

Store Website: www.paxtonwood.com

Frank Paxton Lumber Wood of the Month

The featured Wood of the Month for August 2016 from Frank Paxton Lumber is four-quarter (4Q), S3S Birch in random widths in 6 to 8 foot lengths.

As always, call 303-399-6047 for pricing.

Rocky Mountain Marquetry Guild

**free and open
to the public**



August 18th Meeting - 6:30 pm

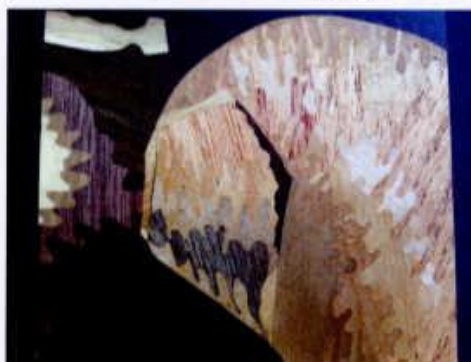
**Summit of the Peace Lutheran Church
4661 East 136th Ave.
Thornton, CO 80602**



Special Guest
Kagen Sound
www.kagensound.com

Kagen Sound is a full-time artist known for his complex secret opening boxes.

His work has received grand prize and people's choice awards numerous times in the international NobYoshigahara puzzle design competition. He is acknowledged as a master craftsman by the Karakuri Creation Group, the worlds only guild of secret box makers in Japan.



www.comarquetry.org

2016 Guild Officers



Cary Goltermann – President
president@coloradowoodworkersguild.org

Jim McNamee—Vice President
vice-president@coloradowoodworkersguild.org



Laura Peterson – Treasurer
treasurer@coloradowoodworkersguild.org

Gary Glatthar – Secretary
secretary@coloradowoodworkersguild.org

Bob Kleinfeldt – Board Member at Large
email address pending



Guild Committee Chairs

Audio – Video – Committee
video@coloradowoodworkersguild.org

Classes - **Vacant**
classes@coloradowoodworkersguild.org

Community Service - Charles Kuechenmeister & Jeff Roth
community-service@coloradowoodworkersguild.org



Newsletter Editor – Al Limiero
newsletter@coloradowoodworkersguild.org

Programs - **Vacant**
programs@coloradowoodworkersguild.org

Publicity and Public Relations - Jack Brock
publicity-pr@coloradowoodworkersguild.org

Shows and Exhibits – Kevin Loyd
shows@coloradowoodworkersguild.org



Librarian - Chuck Hix
library@coloradowoodworkersguild.org

Refreshments – Dick Daily
hospitality@coloradowoodworkersguild.org



Membership – Dennis Machlica
membership@coloradowoodworkersguild.org

Classified Ads – Michael Cunningham
classifiedads@coloradowoodworkersguild.org



Webmaster – Wilbur Goltermann
webmaster@coloradowoodworkersguild.org

CWG Sponsors

The Colorado Woodworkers Guild is fortunate to have several companies as Sponsors. The Sponsors help the Guild with programs, materials, supplies, facilities, display space, financial, and other means. In many cases, Guild members are able to obtain discounts from our Sponsors (except for power tools and sale items). Please note: the Guild discounts only apply to in-person purchases in the store (except where noted) and are not available at any sponsor's online store. You must show a current membership card to obtain the discount

A Cut Above 16512 Arminta Street Van Nuys, CA 91406 Phone: 800-444-2999 Website: www.acutabove.com

Austin Hardwoods of Denver, Inc. 975 W. Mississippi Denver, CO 80223 Phone: 303-733-1292 Website: www.austinhardwoods.com

B & B Rare Woods 871 Brickyard Circle, Unit C4 Golden, CO 80403 Phone: 303-986-2585 Website: www.wood-veneers.com

Charlie's 2nd Hand Store, Inc. 2227 Larimer Street Denver, CO 80205 Phone: 303-295-1781 Website: www.usedtoolsplus.com

Collector's Specialty Woods

Collector's Specialty Woods 4355 Monaco Street, Unit A Denver, CO 80216 (this is their Denver show-room and warehouse)

Collector's Specialty Woods 8055 County Road 570 Gardner, CO 81040 (this is their southern Colorado wood yard, kiln drying facility, woodshop, and another show-room) Phone: 800-746-2413

Denver Woodworking Company 2062 S. Bannock Street Denver, CO 80223 Phone: 303-733-3130 Website: www.denverwoodworking.com

EZ Dado 5220 E. 130th Circle Thornton, CO 80241 Phone: 303-902-8134 Website: www.ezdado.com

Mile High Tree Care, Inc. 6010 W. 56th Avenue, Arvada, CO 80002 Phone: 303-292-9393 Website: www.milehightreecare.com

Mountain View Window and Door 815 S. Jason Street Denver, CO 80223 Phone: 303-649-2217 Website: www.mtnview.us

Frank Paxton Lumber Company 4837 Jackson Street Denver, CO 80216 Phone: 303-399-6047 Website: www.paxtonwood.com/denver.aspx

Reclaimed Boxcar Flooring Phone: 303-913-6373 Website: www.reclaimedboxcarflooring.com

Rockler Woodworking and Hardware 2553 S. Colorado Blvd Denver, CO 80222 Phone: 303-782-0588 Website: www.rockler.com/retail/denver-colorado-hardware-store.cfm

Signature Medallions 4218 Ponce De Leon Drive La Mesa, CA 91941 Phone: 619-303-2876 Website: www.signaturemedallions.com

TC Woods 5406 County Road 23 Ft. Lupton, CO 80621 Phone: 3-666-8989 Website: www.tcwoods.com

Tool Zone, Inc. 8651 Grant Street, Unit 1A Thornton, CO 80229 Phone: 303-252-8500 Website: www.toolzone.com

Woodcraft of Denver 6770 S. Peoria Street Centennial, CO 80112 Phone: 303-290-0007 Website: <http://www.woodcraft.com/stores/store.aspx?id=305>

12/09/2015

Login Information

Full Name

Email Address

Username

Badge Name

Contact Information

Street Address

State

Phone Number

City

Zip Code

Website

Guild Participation Profile

- | | | | | |
|-----------------------|---|---|---|--|
| Woodworking Interests | <input type="checkbox"/> Cabinet making | <input type="checkbox"/> Home remodeling | <input type="checkbox"/> Hand tools | <input type="checkbox"/> Tools, jigs, shop |
| | <input type="checkbox"/> Furniture | <input type="checkbox"/> Small projects | <input type="checkbox"/> Turning | <input type="checkbox"/> Veneering, Inlay |
| | <input type="checkbox"/> Wood Bending | <input type="checkbox"/> Other | | |
| Willingness to Mentor | <input type="checkbox"/> Cabinet making | <input type="checkbox"/> Home remodeling | <input type="checkbox"/> Hand tools | <input type="checkbox"/> Tools, jigs, shop |
| | <input type="checkbox"/> Furniture | <input type="checkbox"/> Small projects | <input type="checkbox"/> Turning | <input type="checkbox"/> Veneering, Inlay |
| | <input type="checkbox"/> Wood Bending | <input type="checkbox"/> Other | | |
| Willingness to Serve | <input type="checkbox"/> No Interest | <input type="checkbox"/> Maybe Later | <input type="checkbox"/> Elected office | <input type="checkbox"/> Community service |
| | <input type="checkbox"/> Membership | <input type="checkbox"/> Public relations | <input type="checkbox"/> Meeting programs | <input type="checkbox"/> Class committee |
| | <input type="checkbox"/> Library | <input type="checkbox"/> Newsletter | <input type="checkbox"/> Shows & exhibits | <input type="checkbox"/> Website |
| | <input type="checkbox"/> Audio/Video | <input type="checkbox"/> Other | | |

Shared Information

Do you wish to share your portrait and woodworking biography:

☐ Yes ☐ No

Woodworking Biography:

Please return this form at any Guild meeting or via mail to:
Colorado Woodworkers Guild, P.O. Box 100996, Denver, Colorado 80250
ColoradoWoodworkersGuild.org
(303)523-8960