



Encouraging all woodworkers in self-expression, craftsmanship and knowledge

Colorado Woodworkers Guild

September 2015

Upcoming Events

September 15, 2015 - Member Bill Fox has agreed to give us a presentation about building his Green & Green Dining Room Chairs. Bill entered one of his chairs (one of eighteen he made) in the July Show & Tell. Many asked if he would give us a presentation on building these. Bill has generously agreed to do this. For those of you who were not present at the July meeting below is a picture of his chair. If you'd like to see more of the chair click [here](#) to go to the pictures for the July Show And Tell



October 20, 2015 - I am hoping to get some member mini-presentations. Got a jig you made? Or perhaps a project you'd like to show off? Or some joinery technique you could demonstrate? Please send me an email

president@coloradowoodworkersguild.org

October 24, 25, 31 and November 1 - Rockler Gallery. Rockler will have its annual Gallery in the Basement (where we hold our meetings). The gallery is attended by all the clubs who hold meetings at Rockler. These include:

- Front Range Woodturners
- Rocky Mountain Shipwrights
- 700th Scale and Radio Control Club
- Rocky Mountain Marquetry Club
- Colorado Woodworkers Guild

We need items to display and help manning the booth. You can sign up to help [here](#). If you cannot help man the booth but have an item for us to display please send me an email.

November 17, 2015 - Ben Little from the Rycroft Campus will be giving us a presentation. Take a look [here](#) for more info on Ben.

December 12, 2015 - Traditionally we have no meeting in December. In its stead we have our annual Holiday Party.

Presidents Message

Old Newsletters:

While cleaning out one of the guilds cabinets in Rockler's basement, I came across a stack of papers and went through them. Among these were some newsletters from the early 1980s. I separated the newsletters out, organized them (the pages were somewhat mixed up), scanned them in and uploaded them to the guilds web site. If you are interested you can download them just like our newer newsletters. To do this:



Go to <http://coloradowoodworkersguild.org/index.php/open-to-the-public/guild-newsletters>

Scroll to the bottom of the page and click on the "2" to get to the older newsletters (Second page of newsletters).

Scroll to the bottom of that page and you should see newsletters dating from the 1980s. There are two from 1981, six from 1982, three from 1983 and three from 1984.

[Here](#) is a link to the guilds very first newsletter.

November Meeting:

In the guild's first newsletter there is a letter from the guild's first president, James W. Brandt. He describes how the guild was formed and states that the first ever meeting of the guild was held in November 1980. So the November meeting will be the 35th anniversary meeting!

Member Involvement:

The guild exists due to the efforts of its members. I've been asking all y'all for more help and I'm glad to say I'm getting it. We are getting pretty good support for the upcoming Gallery in Rockler's basement. I recently asked for some help with running the video gear during a meeting. At this point there are several members who are willing to learn how to do this. Members are helping to clean up after a meeting, which is greatly appreciated.

As we approach the end of the year, I have a couple more requests. For the October meeting, I'm trying to plan a few "mini-demos". I've got one lined up but need a couple more. Do you have a jig you could talk about or a joinery technique? Just a few minutes.

Finally, I've got no presentations lined up for next year. Any ideas would be greatly appreciated. Drop me a line if you've got any.

Cary Goltermann - Le Président

Shows And Exhibits

The WoodWorking Shows:



The WoodWorking Shows has finally posted its 2016 schedule. The bad news is they are not coming to Denver at all! Above is a map (from <http://www.thewoodworkingshows.com/shows.htm>) of the 2016 shows. I enjoy this show and will miss its presence in Denver. I may make a trip to KC to see it there. Then again driving to KC in February doesn't sound like much fun.

Rockler Gallery:

On October 24th and 25th and October 31st November 1st, Rockler will have its annual Gallery in its basement. The gallery is attended by all the clubs who hold meetings in Rockler's basement.

We need people to help man the booth and items to display. So far we have volunteers for most of the days of the show. We could use some help on November 31st. You can signup here

<http://coloradowoodworkersguild.org/index.php/2015-rockler-gallery>.

We could also use some help with demos. Can you do a simple demo on one or more of the days?

Cary Goltermann – Occasional Assistant to the Shows And Exhibits Chair

Community Service

IT'S NOT TO LATE TO MAKE SOME TOYS??

The Community Service Committee is gearing up for the 2015 Holiday Toys Program. Members help cut, drill, sand and decorate toys from materials furnished by the Guild.

The toys are distributed at the Holiday season to child resource agencies, such as shelters and other programs for abused and at-risk kids.

A lot of the work is done at work sessions held at Jeff Roth's shop in Parker, in members' own shops, or both.

This is a great opportunity for members who would like to gain more experience making toys to work alongside members who are old pros at this game.

Any member who would like to learn more about the program, or sign up to be on the Toys Brigade for this season, should call or write

Charlie Kuechenmeister at 303 830 2555/

charlesk13@gmail.com or Jeff Roth at 303 517 7095/jeffroth@myawai.com.

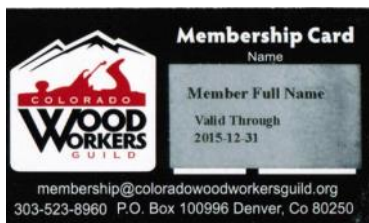
If you are planning to make toys in your own shop it is important for you to let us know how many and what kind of toys you are planning to build.

Membership

Membership Problems??? Send an email to: president@coloradowoodworkersguild.org

All memberships expire on December 31 of the current year. Starting in November we will begin to issue member cards for the 2016 calendar year. New members joining after November 1st will receive a membership card good through 2016-12-31. Existing members can start to renew in November.

Member cards are made up using a Brother P-Touch label printer (which is also used to put names on member badges). The member cards for 2015 have the name and expiration printed in black on a silver label as shown here



I am about to order different color label tape for use in the 2016 calendar year. One of three colored tapes will be used for 2016. They are shown above. I asked for your input in the August newsletter I'm asking again now, send me an email. So far the winner is Black on Yellow. I'll ask again at the September meeting.

**White Print
on Black Tape**

**Gold Print
on Black Tape**

**Black Print
on Yellow Tape**

Member Badges:

When I took over as guild president our member badges were completely custom, laser engraved wood. There were several hundred in one of the storage cabinets which had never been claimed. I like the custom badges, they are of wood and pretty classy but, I dislike waste. The guild paid for these unclaimed badges and I would rather spend that money on other things (like subsidizing classes and

presentations). I took the unclaimed member badges and used iron on oak banding to cover the engraved name. The name for a member badge is printed using the same label printer we use for membership cards. So, we can make badges on demand. If you have never received a member badge, please contact me at a member meeting and I'll get you fixed up.



Cary Goltermann - Assistant to the Membership Chair

In Class

There are no scheduled classes at this time

Cary Goltermann – President and Some-time Student

August Presentation

From Tree to Bowl

How do you turn a tree stump into something decorative? Travis Brown showed us how he does it using 4-1/2" power grinders and an assortment of specialty blades. Travis, a Guild member for several years, brought his own handheld grinders and representative blades for them. He explained how he uses each one to carve dishes, bowls and other items from logs and cut-offs rescued from his backyard wood pile.

The cut-offs Travis selects are about a foot in diameter, small by traditional tree carving standards. He often chooses to work on tree stumps because they can contain nicely figured wood. Revealing those visual treasures comes at a price though. Working a cut-offs surfaces is a messy process. A power grinder's head spins as fast as 14,000 RPM throwing off many sharp chips. To defend against them, Travis advises wearing ample protective equipment including a dust mask, face shield, apron, hat, and safety ear muffs.

Unlike a portable router, a handheld grinder must hover above the area where wood is removed and carefully guided along the desired path. Power grinders weigh several pounds so a wood carver's arms can fatigue quickly. Fatigue leads to mistakes. Frequent cracks, checks and splits in the wood further complicate accurate work. The grinder's blade can fracture these defects sending the cutting blade in an unintended direction. When this happens, Travis advises it's time to improvise or revise the original design. The size of the grinder, its blades and the dimensions of the cut-off limit the shape of the contours that can be achieved. Finer details, for example, require working either with hand tools such as a spoon plane or using smaller power carving tools. Rough spots left by the grinding process usually need to be smoothed with an assortment of specialized power sanding tools.

Electric power grinders can be purchased for \$30 to \$100. Depending on the type of cutting head and how long wearing you'd like it to be, individual cutters can cost as much or more than the grinder itself. King Arthur's Tools and Arbortech are two of the sources Travis mentioned for these. He advises a go-slow approach. Learn how the tool behaves in your hands with the particular cutting head and wood species chosen.

Travis received a warm round of applause and many thanks for his presentation. At the end of his presentation, he kindly offered to let interested audience members try their hand at using a power grinder.

James McNamee

To view this presentation, [Click here](#), Log In, and click on the video you wish to see.



Large Grinder



Large Bowl



YAB Yet Another Bowl



Smaller Grinder



Carved Bowl

Show & Tell

The guild's August meeting was as close as we get to mixed media in a group based on woodworking with a mix of new, old, wood, and steel.

First off was Paul Seipel with a bandsaw box made of pine and cedar. Paul who has taught quite a few members how to make bandsaw boxes made this one with \$14 worth of Home Depot's finest. And while he typically makes and teaches to make the profile last, this time he didn't and Paul even admitted that it turned out acceptably. He was going to a bandsaw box with no sides and managed it with a bit of style.

Next was Scott Roth who answered the question of what do you do when you have way too many hand saws and wooden levels? Scott found they can make a unique shelving system. For those that have always had trouble hanging shelves so they come out level this design has a built-in indicator.

Sam Thomas brought in something to show and tell that was completely free of wood, and he made it out of the meeting alive. Sam brought a modified jack that uses a Harbor Freight hand jack to life heavy items, like those that might be found in a shop. Sam actually needed to move a 600 pound cash iron stove and after much cogitating this was the answer to his problem and it appears applicable to other heavy things some of us might need to move.

The winner of the night was Wilbur Goltermann who brought in a bow-legged side table. Wilbur said he got it off of Craigslist from some character named Doug Pinney, but he later alleged that he actually made it. The legs were made of ambrosia maple as was the skirt, and the top was made of gummy cherry. The plans Wilbur used were from the overly-complex-joinery section and he revised the leg/skirt joints to something more suitable. Finished with five coats of hand rubbed spar varnish and wax it is a very nice addition to his living room.

Thank you to everyone that brought in their pieces to share with the rest of the guild. This is a great way to share with the rest of the group what we are all doing and the kinds of projects we like to do so please load up your items and show them off.

Kevin Loyd Shows & Exhibits Chair

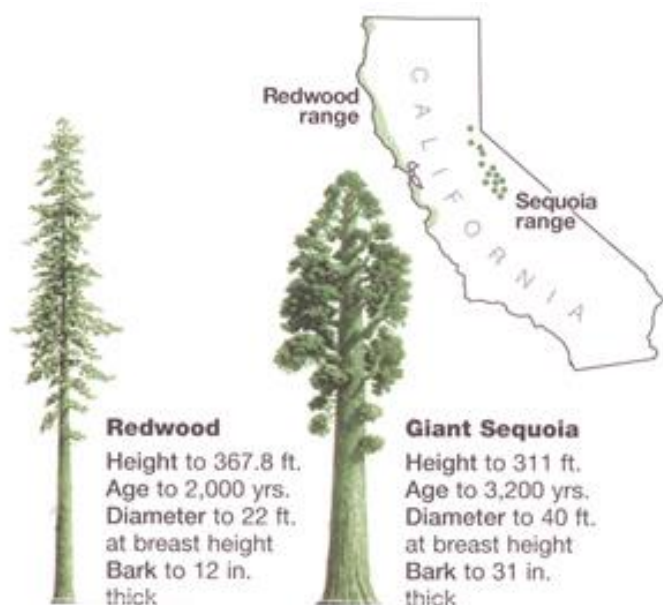


About Wood

For this month of September 2015, we consider **Redwood**. The most common redwood is the **Coast Redwood** (also called **California Redwood**) with the scientific name **sequoia sempervirens** from the family **Taxodiaceae**. The current distribution of this redwood is in a restricted region about 10 to 35 miles wide extending from southwest Oregon for 500 miles into California along the Pacific slope of the coast range. Redwood is the world's tallest tree species, capable of attaining heights of nearly 400 feet. The related **sequoiadendron giganteum** species is found on the western slope of the Sierra Nevada Mountains in central California.

Recall that in previous columns, we have defined the Modulus of Rupture (MOR), the Modulus of Elasticity (MOE), Crush Strength, and Janka Hardness. We will continue to use those terms. Most of the other terms are generally well understood and will not be defined further. If you have questions about other terms or questions about a specific wood, contact wood@coloradowoodworkersguild.org.

Redwood (Coast Redwood) sees limited harvest, especially from farmed trees. Figures below represent the average between old growth and second growth. Old growth is typically heavier, harder and stronger.



Redwood:

Here is a summary of the characteristics.

Distribution: Southwestern Oregon to coastal central California

Tree size: 200-300 ft. (60-90 m) tall; 6-12 ft. (1.8-3.7 m) trunk diameter

Average Dried Weight: 26 lbs/ft³ (415 kg/m³)

Specific Gravity: (Basic, 12% MC): .36, .42

Modulus of Rupture (MOR): 8,950 lbf/in² (61.7 MPa)

Modulus of Elasticity (MOE): 1,220,000 lbf/in² (8.41 GPa)

Crush Strength: 5,690 lbf/in² (39.2 MPa)

Janka Hardness: 450 lbf (2,000 N) **Shrinkage:** Radial, 2.4%; Tangential, 4.7%; Volumetric, 6.9%; T/R Ratio, 2.0

Heartwood Appearance: light pinkish brown to deep reddish brown

Sapwood Appearance: only narrow band of pale white or yellow

Grain/Texture: straight with open, coarse texture and low natural luster

Stability: high dimensional stability after seasoning

Relative strength: bending and crushing strength is medium

Decay Resistance: moderate to very durable

Workability: easy with hand tools or machinery; glues and finishes well

Odor: distinct odor when being worked

Toxicity: sensitizer

Potency: low

Toxicity Source: dust

Reaction: skin, asthma, and nasal cancer

Sustainability: available on irregular basis; considered as vulnerable

Uses: veneer, construction lumber, beams, posts and rails, decking

Typical Cost: mid to upper price range; clear or figured more expensive

If you have questions about a specific wood, don't hesitate to send a note to wood@coloradowoodworkersguild.org.

Sponsor's Corner

Sponsor Profile: Reclaimed Boxcar Flooring

Tom Kirk and his **Reclaimed Boxcar Flooring** business has been recovering and repurposing architectural salvage for over 20 years. Though he gets much of his material from railcars, his first project many years ago was when he acquired and resold bumper cars.

Today he focuses mostly on wood and tries to stay with the latest trends. He recovers the large beams from crane mats, beams from rail flat cars, and boxcar flooring (when he can get it). This past year he recovered structural “lam” beams during the demolition of a Denver school. He resawed the beams and sold the resulting slabs.

He has recently acquired many rail car axle supports (white oak; see photo) and converted some of these into sample table tops (another photo). He resaws some of the better beams and then oils them. His work results in quality slabs that can be used for mantles, counter tops, flooring and tables. Restaurants and bars are some of his primary customers.

Sometimes Tom may acquire items before he has a clear idea of the possible uses. As an example, he recently obtained some 1880 cast iron columns that were recovered from the Denver Union Station remodel. Judging from experience, he will find the buyers. Tom has his own yard and he is surprised at how fast some items will move after he readies them for sale. Tom says that his greatest challenges are finding and obtaining the materials and staying ahead of the trends for such materials.

Reclaimed Boxcar Flooring is one of the newest Guild sponsors. We appreciate Tom's support and look forward to the continuing relationship.

Paxton Wood of the Month

The **Wood of the Month** for September at Frank Paxton Lumber is 4Q **brown ash**. The lumber comes surfaced on three sides (S3S) in random widths and lengths. As usual, please call 303-399-6047 for pricing.



Bits & Pieces

Photos from August Presentation



Carved Bowl



Chain Saw Disc



Small hand Tools



Small Grinder



Blade Used to Plane

Guild Business



Community Service

Introductions



Daniel



Recruiting for



refreshments

Cary being



President



2015 Guild Officers



Cary Goltermann – President
president@coloradowoodworkersguild.org

Bob Kleinfeldt – Vice President
vice-president@coloradowoodworkersguild.org



Laura Peterson – Treasurer
treasurer@coloradowoodworkersguild.org

Mark Childs – Secretary
secretary@coloradowoodworkersguild.org



Guild Committee Chairs



Audio – Video – Cal Noguchi
video@coloradowoodworkersguild.org

Classes - **Vacant**
classes@coloradowoodworkersguild.org

Community Service - Charles Kuechenmeister & Jeff Roth
community-service@coloradowoodworkersguild.org



Al Limiero – Newsletter Editor
newsletter@coloradowoodworkersguild.org

Programs - **Vacant**
programs@coloradowoodworkersguild.org



Publicity and Public Relations - Lindy Baer
publicity-pr@coloradowoodworkersguild.org

Kevin Loyd – Shows and Exhibits
shows@coloradowoodworkersguild.org



Librarian - Roger Abraham
library@coloradowoodworkersguild.org

Refreshments – Dick Daily
hospitality@coloradowoodworkersguild.org



Dennis Machlica – Membership
membership@coloradowoodworkersguild.org

Classified Ads – Michael Cunningham
classifiedads@coloradowoodworkersguild.org



Wilbur Goltermann – Webmaster
webmaster@coloradowoodworkersguild.org

CWG Sponsors

The Colorado Woodworkers Guild is fortunate to have several companies as Sponsors. The Sponsors help the Guild with programs, materials, supplies, facilities, display space, financial, and other means. In many cases, Guild members are able to obtain discounts from our Sponsors (except for power tools and sale items). Please note: the Guild discounts only apply to in person purchases in the store (except where noted), and are not available at any sponsor's online store. You must show a current membership card to obtain the discount

Sponsor List

A Cut Above 16512 Armintha Street Van Nuys, CA 91406

Phone: 800-444-2999 Website: www.acutabove.com

Austin Hardwoods of Denver, Inc. 975 W. Mississippi Denver, CO 80223

Phone: 303-733-1292 Website: www.austinhardwoods.com

B & B Rare Woods 871 Brickyard Circle, Unit C4 Golden, CO 80403

Phone: 303-986-2585 Website: www.wood-veneers.com

Charlie's 2nd Hand Store, Inc. 2227 Larimer Street Denver, CO 80205

Phone: 303-295-1781 Website: www.usedtoolsplus.com

Collector's Specialty Woods

Collector's Specialty Woods 4355 Monaco Street, Unit A Denver, CO 80216 (this is their Denver show-room and warehouse)

Collector's Specialty Woods 8055 County Road 570 Gardner, CO 81040 (this is their southern Colorado wood yard, kiln drying facility, woodshop, and another show-room) Phone: 800-746-2413

Denver Woodworking Company 2062 S. Bannock Street Denver, CO 80223

Phone: 303-733-3130 Website: www.denverwoodworking.com

EZ Dado 5220 E. 130th Circle Thornton, CO 80241

Phone: 303-902-8134 Website: www.ezdado.com

Frank Paxton Lumber Company 4837 Jackson Street Denver, CO 80216

Phone: 303-399-6047 Website: www.paxtonwood.com/denver.aspx

Mountain View Window and Door 815 S. Jason Street Denver, CO 80223

Phone: 303-649-2217 Website: www.mtnview.us

Reclaimed Boxcar Flooring

Phone: 303-913-6373 Website: www.reclaimedboxcarflooring.com

Rockler Woodworking and Hardware 2553 S. Colorado Blvd Denver, CO 80222

Phone: 303-782-0588 Website: www.rockler.com/retail/denver-colorado-hardware-store.cfm

Signature Medallions 4218 Ponce De Leon Drive La Mesa, CA 91941

Phone: 619-303-2876 Website: www.signaturemedallions.com

TC Woods 5406 County Road 23 Ft. Lupton, CO 80621

Phone: 3-666-8989 Website: www.tcwoods.com

Tool Zone, Inc. 8651 Grant Street, Unit 1A Thornton, CO 80229

Phone: 303-252-8500 Website: www.toolzone.com

Woodcraft of Denver 6770 S. Peoria Street Centennial, CO 80112

Phone: 303-290-0007 Website: <http://www.woodcraft.com/stores/store.aspx?id=305>

Login Information

Full Name

Email Address

Username

Badge Name

Contact Information

Street Address

State

Phone Number

City

Zip Code

Website

Guild Participation Profile

- | | | | | |
|-----------------------|---|---|---|--|
| Woodworking Interests | <input type="checkbox"/> Cabinet making | <input type="checkbox"/> Home remodeling | <input type="checkbox"/> Hand tools | <input type="checkbox"/> Tools, jigs, shop |
| | <input type="checkbox"/> Furniture | <input type="checkbox"/> Small projects | <input type="checkbox"/> Turning | <input type="checkbox"/> Veneering, Inlay |
| | <input type="checkbox"/> Wood Bending | <input type="checkbox"/> Other | | |
| Willingness to Mentor | <input type="checkbox"/> Cabinet making | <input type="checkbox"/> Home remodeling | <input type="checkbox"/> Hand tools | <input type="checkbox"/> Tools, jigs, shop |
| | <input type="checkbox"/> Furniture | <input type="checkbox"/> Small projects | <input type="checkbox"/> Turning | <input type="checkbox"/> Veneering, Inlay |
| | <input type="checkbox"/> Wood Bending | <input type="checkbox"/> Other | | |
| Willingness to Serve | <input type="checkbox"/> No Interest | <input type="checkbox"/> Maybe Later | <input type="checkbox"/> Elected office | <input type="checkbox"/> Community service |
| | <input type="checkbox"/> Membership | <input type="checkbox"/> Public relations | <input type="checkbox"/> Meeting programs | <input type="checkbox"/> Class committee |
| | <input type="checkbox"/> Library | <input type="checkbox"/> Newsletter | <input type="checkbox"/> Shows & exhibits | <input type="checkbox"/> Website |
| | <input type="checkbox"/> Audio/Video | <input type="checkbox"/> Other | | |

Shared Information

Do you wish to share your portrait and woodworking biography:

☐ Yes ☐ No

Woodworking Biography:

Please return this form at any Guild meeting or via mail to:
Colorado Woodworkers Guild P.O. Box 100996, Denver, Colorado 80250
ColoradoWoodworkersGuild.org